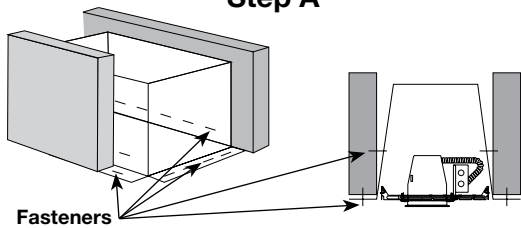


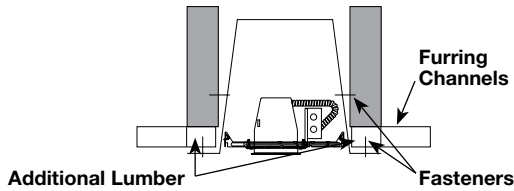
ELCO Lighting FIREENCL Installation Instruction

Step A



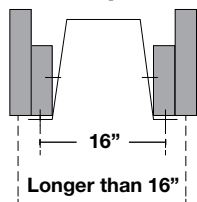
Open FIREENCL turn it so flanges are placed under joists. Secure it's sidewalls to the joist sides about 1 inch from the bottom of joist. Secure the enclosure with fasteners (nails, staples, or screws with flat washers) to the joist every 3 inches.

Step B



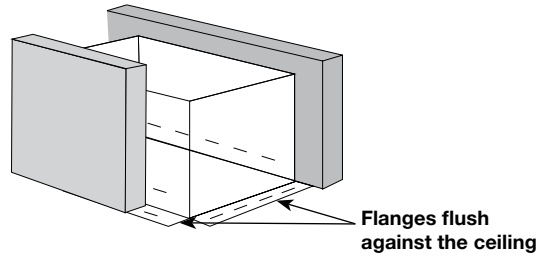
If you are working with furring channels, use lumber strips or plywood to adjust the joist to be level. Lumber strips or plywood should be equal or longer in length as the enclosure sidewalls.

Step C



Attach additional lumber pieces to the joist if the space is greater than 16 inches. The length of lumber pieces should be equal or longer than the enclosures sidewalls. Depending on the size of lighting housing or your working space you might have to turn the FIREENCL horizontally to fit a 24 inch space.

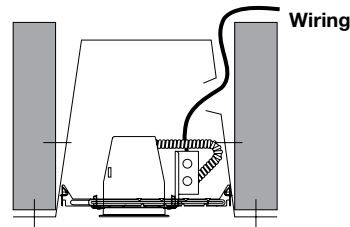
Step D



Make sure all 4 flanges are flush against the ceiling by the time the ceiling is complete.

Step E

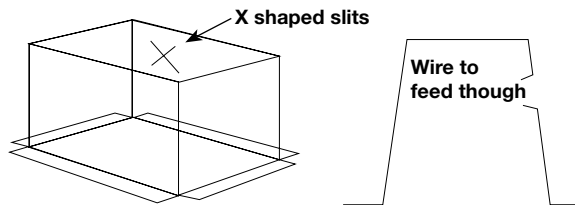
Light Fixture Installation



Please follow the manufacturer's instructions when installing the light fixture. Adhere to national and local electric codes. The lamp rating for a given light fixture shouldn't go higher than 2x 26W CFL lamps. Mounting fasteners should be driven through the enclosure walls easily. Always use FIRETAPE to cover any openings.

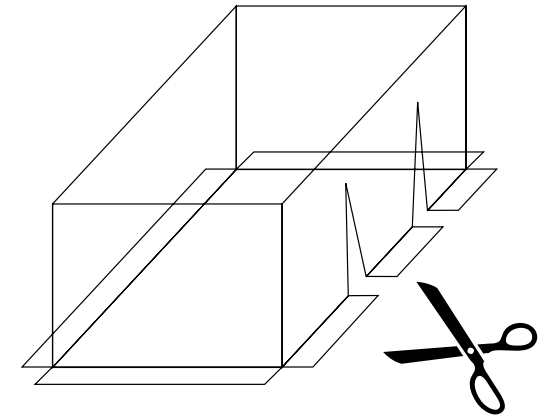
Step F

Wiring



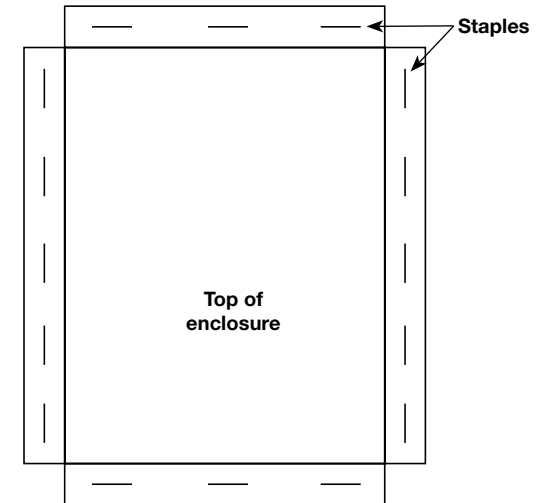
Make a X shaped opening through the enclosure wall to feed the wiring through. Use FIRETAPE to cover any openings after the wiring has been fed through.

Step G



If a lighting fixture has already been installed, use a pair of scissors to modify the enclosure so it will fit over the lighting fixture mounts. Be sure to follow steps A to D and use FIRETAPE to cover any openings.

Step H



For a lighting fixtures and or fire rated ceilings suspended/secured by a metal grid refer to step G and use staples every 3 inches to fasten flanges to the ceiling. Be sure to cover any openings with FIRETAPE. FIRETAPE is sold separately.