



# The **Birch**<sup>TM</sup> System

Commercial Birch<sup>TM</sup> LED Module  
& 4", 6" & 8" Twist-On Trims

4", 6", & 8" **Commercial Frames**

Birch<sup>TM</sup> **LED Module & Trims**

A full line of sleek and modern high-quality commercial-grade LED Lighting developed to provide offices, conference rooms, lobbies, retail, medical, or any hospitality space a more sophisticated finish. The term "commercial grade" means increase durability and advanced lighting technology in spacious spaces. The Birch<sup>TM</sup> System offers maximum flexibility and premium grade optics that will provide designers and architects the necessary choices when layout a room, whether spotlighting a specific space or lighting up a room this system will meet any project needs.

# The Birch™ System



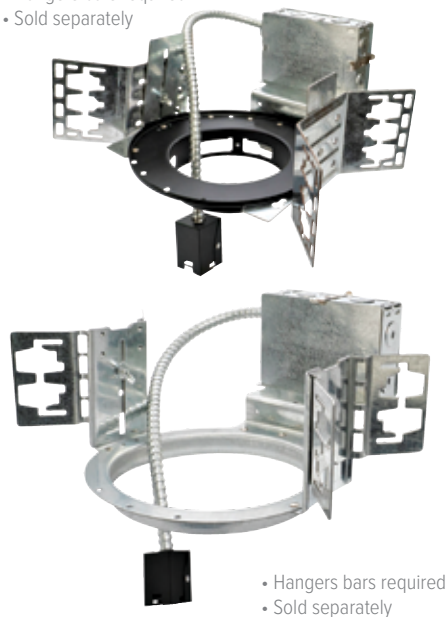
# Birch™ Commercial Frames

- Architectural Frame, Plaster Frame & Remodel applications
- Encased quick connect for easy Module installation

- Emergency Battery Backup available
- Hanger bars sold separately for Architectural Frames

## 4", 6" & 8" Architectural Frames

- Hangers bars required
- Sold separately



New Construction with 90 min  
Emergency Battery Backup

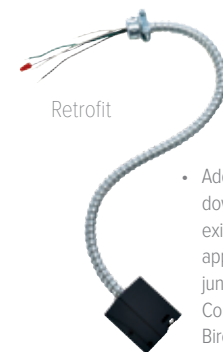
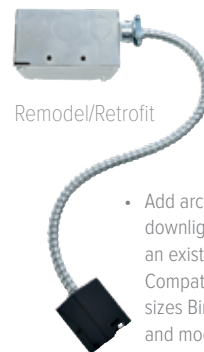
## 4", 6" & 8" Plaster Frames

- With Hangers bars



New Construction with 90 min  
Emergency Battery Backup

## Remodel/Retrofit & Retrofit Applications



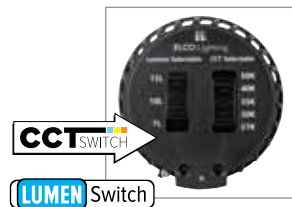
# Birch™ LED Modules & Twist-On Trims

- Adjustable Focus beam angle allows for manual beam angle adjustment with the ease of a twist

- 120/277V input with 0-10V dimming
- Both Modules work with 4", 6" & 8" Birch™ Commercial Frames & Twist-On Trims

## Birch™ Pro LED Module

<b>Input Power</b>	10W / 12W / 20W
<b>Input Voltage</b>	120/277V
<b>Lumens</b>	750 / 1000 / 1500
<b>Color Temp.</b>	2700K - 5000K
<b>CRI</b>	93+
<b>Damp Location</b>	ETL listed
<b>Dimmable</b>	0-10V
<b>Beam Angle</b>	25° - 45°



**5-CCT Switch**  
2700K, 3000K, 3500K,  
4000K, 5000K  
**Lumen Switch**  
15L - 1500 lm (20W)  
10L - 1000 lm (12W)  
7L - 750 lm (10W)

## Birch™ High Lumen LED Module

<b>Input Power</b>	13W / 20W / 35W
<b>Input Voltage</b>	120/277V
<b>Lumens</b>	1250 / 2000 / 3000
<b>Color Temp.</b>	3000K, 3500K, 4000K
<b>CRI</b>	93+
<b>Damp Location</b>	ETL listed
<b>Dimmable</b>	0-10V
<b>Beam Angle</b>	22° - 50°



**Lumen Switch**  
30L - 3000 lm (35W)  
20L - 2000 lm (20W)  
12L - 1250 lm (13W)

4"



• Available in White or Haze finish

6"



• Available in White or Haze finish

8"



• Available in White or Haze finish

## Twist-On Reflector Trims