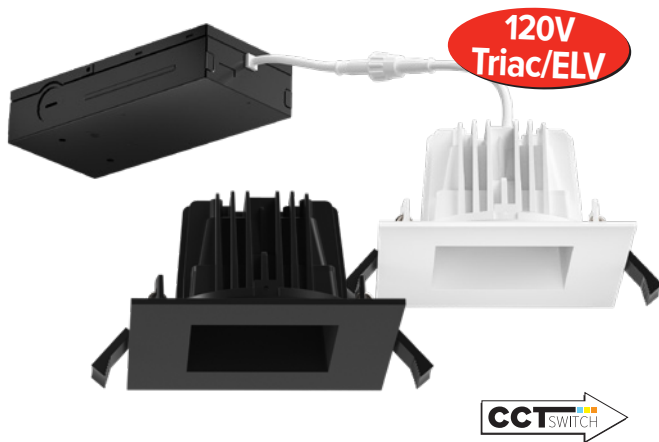


## **NEW!** ELM™ SYSTEM 4" Square Recessed LED Downlights

- IC Airtight for direct contact with insulation
- Designed to fit in plenums as shallow as 3"
- 90+ CRI for extremely accurate color rendering
- Title 24 JA8-2022-E compliant
- Wet location allows for use indoors or outdoors
- Energy Star compliant
- Life span of 50,000 hours L70
- New Construction application required mounting plate or frame. Remodel application requires no additional accessories

DESIGNED TO BE INSTALLED WITHOUT THE NEED FOR A HOUSING!



### 4" Square Reflector LED Downlights with 5-CCT Switch

- CCT Switch: 2700K, 3000K, 3500K, 4000K, 5000K
- Lumen/Wattage: 10W, 1000 lm
- 120V, Triac/ELV
- Includes driver and J-box

**ERT434CT5W** All White  
**ERT434CT5BB** All Black



### 4" Square Reflector LED Downlights with 5-CCT & 3-Lumen Switch

- CCT Switch: 2700K, 3000K, 3500K, 4000K, 5000K
- Lumen/Wattage: 1000 lm (10W), 1400 lm (14W), 1800 lm (18W)
- 120/277V, 0-10V/Triac/ELV
- Includes driver and J-box

**ERT487CT5W** All White  
**ERT487CT5BB** All Black

## Elm™ System Frames & Accessories



**E4LF1** 4" Round



**E246LF1** 2", 4" & 6" Round



**EMP4** 4" Round



**ECNE10** 10 inch cable  
**ECNE11** 10 foot cable

Subject to US tariffs. All other standards, terms and conditions apply.  
 Please provide your e-mail address to [salesadmin@elcolighting.com](mailto:salesadmin@elcolighting.com). To unsubscribe e-mail: [salesadmin@elcolighting.com](mailto:salesadmin@elcolighting.com)

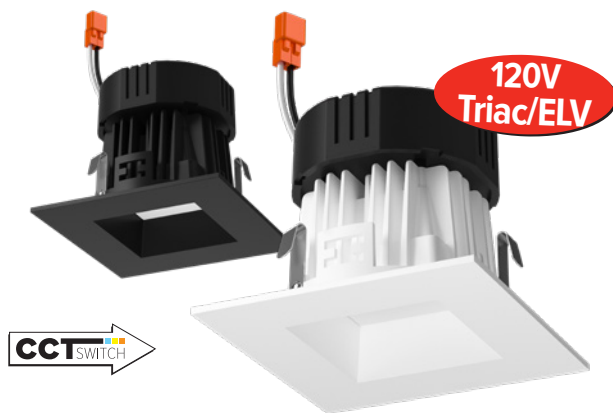
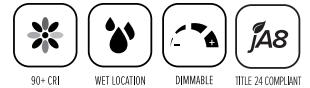


E-mail your order to: [orderdesk@elcolighting.com](mailto:orderdesk@elcolighting.com)  
 Tel: 800.522.2626 • Fax: 800.644.2626

**ELCO Lighting**  
 The Best Choice in Lighting

## **NEW!** 4" Square LED Downlights In Stock!

90+ CRI • Title 24 JA8-2022-E Compliant • Life span of 50,000 hours L70



### 4" Square Reflector LED Inserts with 5-CCT Switch

- 10W, 1000 lm
- CCT Switch: 2700K, 3000K, 3500K, 4000K, 5000K
- Fits ELCO 4" Dedicated LED New Construction or Remodel Recessed Housings
- 120V, Triac/ELV

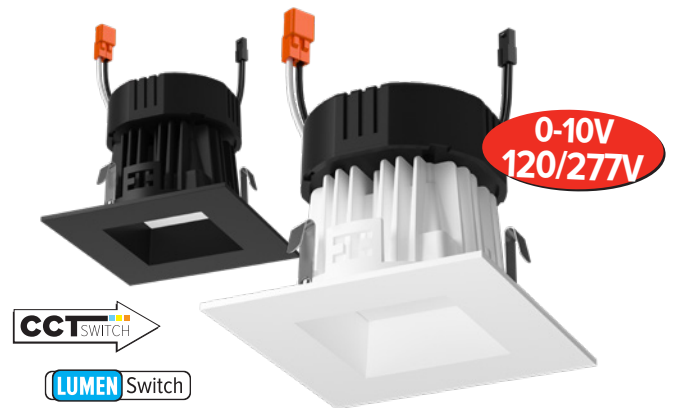
**EL434CT5W** All White  
**EL434CT5BB** All Black

#### Compatible 4" Recessed Housings

New Construction Housing  
**EL490ICA**

Remodel Housing  
**EL490RICA**

2-Hour Fire Rated New Construction Housing  
**EL48FICA**



### 4" 0-10V Square Reflector LED Inserts with 5-CCT and 3-Lumen Switch

- Lumen/Wattage: 1000 lm (10W), 1400 lm (14W), 1800 lm (18W)
- CCT Switch: 2700K, 3000K, 3500K, 4000K, 5000K
- Fits 0-10V ELCO 4" Dedicated LED New Construction or Remodel Recessed Housings
- 120/277V, 0-10V/Triac/ELV

**EL487CT5W** All White  
**EL487CT5BB** All Black

Up to  
**1800 lm**

#### 0-10V Compatible 4" Recessed Housings

New Construction Housing  
**EL490ICDXA**

Remodel Housing  
**EL490RICDXA**

2-Hour Fire Rated New Construction Housing  
**EL49FICDXA**



Subject to US tariffs. All other standards, terms and conditions apply.  
 Please provide your e-mail address to salesadmin@elcolighting.com. To unsubscribe e-mail: salesadmin@elcolighting.com



E-mail your order to: [orderdesk@elcolighting.com](mailto:orderdesk@elcolighting.com)  
 Tel: 800.522.2626 • Fax: 800.644.2626

**ELCO Lighting**  
 The Best Choice in Lighting