

## New Items in Stock!



**NEW!**

### 6" Sloped Ceiling Trims

- Coil springs to keep ring flush with ceiling
- For medium base (E26) PAR lamps
- O.D.: 7 5/8" x 7 7/8"

**EL617W** Reflector / All White

**EL623W** Baffle / All White

### 6" Sloped Ceiling Recessed Housings

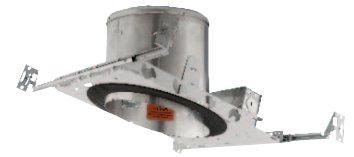
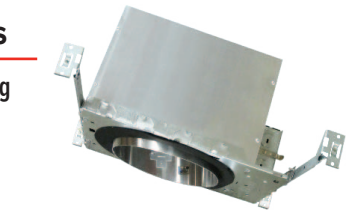
Compatible with EL617W & EL623W

#### 6" IC Airtight Housings

Double Wall New Construction Housing  
**EL936ICA** 90W MAX.

New Construction Housing  
**EL918ICA** 75W MAX.

Remodel Housing  
**EL918RICA** 75W MAX.



#### 6" Non-IC Housings

New Construction Housing  
**EL900HT** 150W MAX.

Remodel Housing  
**EL900RT** 150W MAX.



#### General Accessories

**NEW!**



#### Contractors LED Lamp

- 4000K, LED lamp with quick connect
- For constructor site lighting use only

**PSA41-40**

#### General Accessories



#### Socket Adapter

- Socket Adapter Medium Screw into GU-24

**PSA21**

#### Koto™ Wood Ceiling Ring

**NEW!**



#### 3" Wook Ceiling Adaptor

- Compatible with 3" Trimless Smooth Reflector (ELK315) for wood ceiling applications

**EL3WCRW** White

**EL3WCRB** Black

#### Track/Pendant Accessories

**NEW!**



#### Black Louver

- Black Louver for ET616 & EDL80 Series

**EP325B**

Subject to US tariffs. All other standards, terms and conditions apply.  
 Please provide your e-mail address to salesadmin@elcolighting.com. To unsubscribe e-mail: salesadmin@elcolighting.com



E-mail your order to: [orderdesk@elcolighting.com](mailto:orderdesk@elcolighting.com)

Tel: 800.522.2626 • Fax: 800.644.2626



**ELCO Lighting**

The Best Choice in Lighting