

## Introducing our NEW **Birch™** System

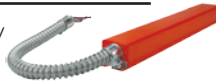
Commercial LED Modules, Twist-On Trims & Frames

Download a FREE digital copy of The Birch™ System Catalog (ELCAT1062) at [elcolighting.com](http://elcolighting.com)



### Birch™ Commercial Frames

- Encased Quick Connect for easy module installation
- Emergency battery backup available



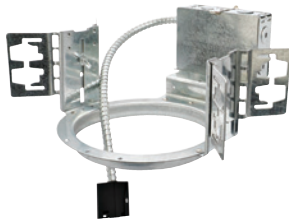
### New Construction Architectural Frames

Hanger bars required

**ELB4EH** 4" Architectural Frame

**ELB6EH** 6" Architectural Frame

**ELB8EH** 8" Architectural Frame



**FB27** 27" Flat Hanger Bars for wood construction (Set of 2)

**CH26** 26" C-Channel Hanger Bars for T-Bar Ceilings (Set of 2)

### New Construction Plaster Frames with Hanger Bars

**ELB4PF** 4" Plaster Frame

**ELB6PF** 6" Plaster Frame

**ELB8PF** 8" Plaster Frame



### Remodel/Retrofit

Add architectural downlighting to an existing ceiling

**ELBRMD**



### Retrofit

To convert an existing fixture to a Birch fixture

**ELBRT**



### Birch™ Twist-On Trims

- Self-flanged spun aluminum reflectors with twist-on mechanism
- Spring loaded mounting clips to hold them tightly in the ceiling

**ELB410W** All White

**ELB410H** All Haze

**ELB610W** All White

**ELB610H** All Haze

**ELB810W** All White

**ELB810H** All Haze



### New Birch™ LED Modules



- Works with 4", 6" and 8" Birch Twist-On Trims and Frames
- 120/277V input with 0-10V dimming
- Encased Quick Connect for easy module installation

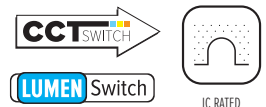


### Birch™ Pro LED Module

- IC Rated for IC and Non-IC applications
- 5-CCT Switch (2700K-5000K)
- Lumen Switch (750 lm -1500 lm)
- Adjustable Focus Beam Angle (25°-45°)



**ELB15RCT5ICA**



### Birch™ High Lumen LED Module

- Non-IC Rated for Non-IC applications
- Lumen Switch (1250 lm -3000 lm)
- Adjustable Focus Beam Angle (22°-50°)



**ELB30R30** 3000K

**ELB30R35** 3500K

**ELB30R40** 4000K



Subject to US tariffs. All other standards, terms and conditions apply.  
Please provide your e-mail address to [salesadmin@elcolighting.com](mailto:salesadmin@elcolighting.com). To unsubscribe e-mail: [salesadmin@elcolighting.com](mailto:salesadmin@elcolighting.com)



E-mail your order to: [orderdesk@elcolighting.com](mailto:orderdesk@elcolighting.com)

Tel: 800.522.2626 • Fax: 800.644.2626

**ELCO Lighting**  
The Best Choice in Lighting