

Oak™ Architectural R60 ICA New Construction Housing for Adjustable Lights



R60 Specialty housing for spray in insulation. To be used with Oak™ Architectural LED Adjustables only.

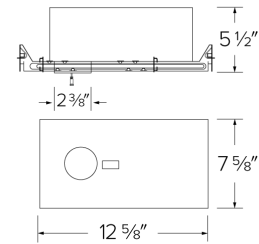
Features

- R60 Housing designed for speciality spray in insulation
- Housing to be used with Oak™ Architectural Adjustables only (E1AK22 & E1AK32)
- UL Listed for direct contact with insulation
- Housing specified for 900 lumens (8W)
- Driver specified for 120V (Triac/ELV) or 120/277V (0-10V/Triac/ELV)
- Damp Location Listed, Wet Location with Wet Location Light Engines
- JA8-2022-E, UL Listed

Specifications

Wattage	8W
Lumens	900 lm
Voltage	120/277V or 120V
Dimmable	Triac/ELV, 0-10V/Triac/ELV

Dimensions



Technical Details

Construction: IC rated for direct contact with insulation. For use in IC and non-IC conditions.

Installation: Designed for ceiling plenums where 2x6 joists or taller are used. High strength hanger bars can easily be nailed to joists. Suitable for T-grid and drop ceiling applications. See installation sheet for detailed information.

Hanger Bars: Pre Installed hanger bars with True Nail easy installation in regular lumber, engineered lumber, and Laminated Beams. Integral T-bar slots for easy installation in T-Bars. Spans up 24" and can be repositioned 90°. Score lines allow for tool-free hanger bar size reduction. Integral leveling flange allows for single-person installation while easily aligning the housings with the joists.

Electrical: Driver is rated for 120V or 120/277V input. High Efficiency driver with a power factor > 0.95.

Dimmability: Option Triac/ELV dimming or 0-10V/Triac/ELV dimming can be specified. Can be specified with Lutron drivers.

Listings: cUL Listed. UL Listed for Damp Location and for Wet Location with WET location Light Engines. UL Listed for Direct Contact with Insulation and Combustible Material.

Product Numbers

Item	Lumens	Watts	Voltage	Dimming
E1ATB08AJIC	900 lm	8W	120V	Triac/ELV
E1ATB08AJICDX	900 lm	8W	120/277V	0-10V/Triac/ELV

Product Number Builder

Example: **E1ATB08AJIC**

R60 ICA New Construction Housing

Lumens

Dimming

E1ATB

08 900 lm

AJIC Triac/ELV
AJICDX 0-10V/Triac/ELV

Compatible Products



For use with 1" Oak™ Architectural IC Airtight New Construction Housings

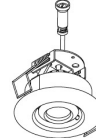
1" Oak™ Architectural Downlights Use with E1DWN08AJIC (2" Cutout)



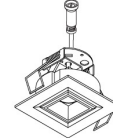
E1AK02 Series
Round Downlight
Finishes:
(W, B, BZ, H, BB)



E1AK12 Series
Square Downlight
Finishes:
(W, B, BZ, H, BB)

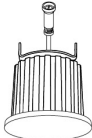


E1AK32 Series
Round Gimbal
Finishes:
(W, B)



E1AK22 Series
Square Pull Down
Finishes:
(W, B)

1" Oak™ Architectural Trimless Use with E1TRL08AJIC (2 3/4" Cutout)

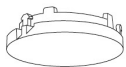


E1AK61 Series
Round Trimless
Finishes:
(W, B, BZ)

PRODUCT NUMBER BUILDER

Oak™ Architectural	Style	Beam Angle	Color Temperature	Finish
E1AK				
	02 Round Downlight	F 38° (Standard)	27 2700K	W All White
	12 Square Downlight	NF 28°	30 3000K	B Black
	32 Round Gimbal	WF 50°	35 3500K	BZ All Bronze
	22 Square Pull Down		40 4000K	H Haze w/White Ring
			SD Sunset	BB All Black

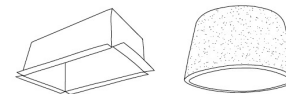
1" Oak™ Accessories



Trimless Rings



Lens & Optics



Fire Rated Products

CAT NO.	SPECIFICATIONS	CAT NO.	SPECIFICATIONS	CAT NO.	SPECIFICATIONS
RM1TLW	All White	EP713C	28° Lens	FIREENCL	Standard - 9" H x 20 3/8" L x 14 3/8" W
RM1TLB	All Black	EP714C	38° Lens	FIREENCL-S	Shallow - 7 1/4" H x 16" L x 14 3/8" W
RM1TLBZ	All Bronze	EP715C	50° Lens		1-Hr Fire Enclosure for Recessed Fixtures
		L60	Frosted Diffuser (For E1AK02, E1AK12, & E1AK32)	FIRECVR	9 3/4" H x 17" O.D. x 13" I.D.
		L61	Hex Louver (For E1AK02, E1AK12, & E1AK32)		2-Hr Fire Cover for Recessed Fixtures



Dimmer Compatibility Chart

Architectural Oak™ System

ELCO Lighting

For E1DWN08, E1ATB08, E1TRL08, and E1LA08 Series

For Reference Only

Testing conducted by ELCO Lighting is not a substitute for and does not imply certification by an independent laboratory or any other standards certification. Refer to manufacturer specifications for more detailed information on product certifications and standards. Consult the dimmer manufacturer prior to installation to ensure compatibility.

Manufacturer	Product	Part Number	Dimmed Light Output Range
For Triac/ELV Dimmers			
Cooper	Slide Dimmer, 277V, 600W Fluorescent/Halogen, Single Pole, 3-Way	SAL06P	10% - 100%
Leviton	Decora SureSlide® Single Pole with Slide -to-Off	6672	10% - 100%
Lutron	Caséta® Wireless Dimmer	PD-6WCL	5% - 100%
	Maestro, 120V AC, 50/60Hz, 150W LED/CFL, 600W Incandescent/Halogen, Single Pole, 3-Way, Indoor Application	MA-PRO	5% - 100%
	Maestro, 120V, 50/60Hz, 150W LED/CFL, Single Pole, 3-Way	MACL-153M	5% - 100%
	Diva® Series 150W Single Pole/3-Way Dimmer	DVCL-153P	5% - 100%
	Skylark, 120V AC 60Hz, 150W LED/CFL, Single Pole, 3-Way	SCL-153P	5% - 100%
	Ariadni®/Toggler® Series 150W Single Pole/3-Way Dimmer	TGCL-153P	5% - 100%
	Diva, 120V AC, 60Hz, 600W Incandescent/Halogen, Single Pole, 3-Way, Residential/Commercial Application	DV-603P	5% - 100%
	Skylark® Series 600W Single Pole	S-600P	5% - 100%
For D Version Triac/ELV Dimmers			
Leviton	Decora SureSlide® Single Pole with Slide -to-Off	6672	10% - 100%
Lutron	Caséta® Wireless Dimmer	PD-6WCL	1% - 100%
	Maestro, 120V AC, 50/60Hz, 150W LED/CFL, 600W Incandescent/Halogen, Single Pole, 3-Way, Indoor Application	MA-PRO	1% - 100%
	Maestro, 120V, 50/60Hz, 150W LED/CFL, Single Pole, 3-Way	MACL-153M	10% - 100%
	Diva® Series 150W Single Pole/3-Way Dimmer	DVCL-153P	1% - 100%
	Skylark, 120V AC 60Hz, 150W LED/CFL, Single Pole, 3-Way	SCL-153P	1% - 100%
	Diva® Series, 120V AC 60Hz, Low Voltage Load Type, 150W Single Pole	DVLV-600P	1% - 100%
	Diva, 120V AC, 60Hz, 600W Incandescent/Halogen, Single Pole, 3-Way, Residential/Commercial Application	DV-603P	1% - 100%
	Skylark® Series 600W Single Pole	S-600P	1% - 100%
For D Version 0–10V			
Lutron	Diva®, 120/277V, 0-10V, Single Pole, 3-Way	DVSTV	1% - 100%
Leviton	Decora Illumatech®, 120/277V, 0-10V, Fluorescent/LED Load Type, Single Pole, 3-Way	IP710	1% - 100%

***NOTE: Refer to dimmer manufacturer’s documentation for installation instructions and circuit details**

Disclaimer: Minimum and maximum loads for LEDs and CFLs are given in number of lamps and may vary depending on the lamp being used. Testing conducted by ELCO Lighting is not a substitute for and does not imply certification by an independent laboratory or any other standards certification. Refer to manufacturer specifications for more detailed information on product certifications and standards.

Integrating our lighting with your Smart Home System is a breeze. Simply check your Smart Home system for compatible smart switches and cross reference that with our Dimming Compatibility Chart. Once the switches are integrated with your Smart Home system your lights will be ready to go.



2042 E. Vernon Ave. Vernon CA 90058 Tel 323.231.2600 Fax 323.231.3200 elcolighting.com