

6" Super Sloped Reflector with PAR30 Gimbal Trim



Features

- Super Sloped Reflector with PAR30 Gimbal.
- Lamp: 75W MAX PAR30.

Technical Details

Construction:

- Meticulously manufactured trim with a powder coated or anodized finish.
- Integral gimbal ring holds lamp and allows for 30° internal adjustability while keeping a flush look on the ceiling.

Installation: Clips securely mount trim into the housing and keeps ring flush with ceiling.

Compatible Housings: EL946ICA, EL901ICA, EL901RICA, EL901HT, EL901RT.

Lamp: Compatible with Medium base (E26) PAR type.

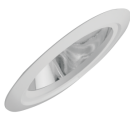
Options



All White



Black w/White Trim



Clear w/White Trim

Product Numbers

Item	Finish
EL604W	All White
EL604B	Black with White Trim
EL604C	Clear with White Trim

Product Number Builder

Example: EL604W

6" Super Sloped Reflector Trim with PAR30 Gimbal

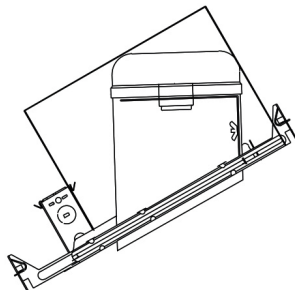
Finish

EL604

- W All White
- B Black with White Trim
- C Clear with White Trim

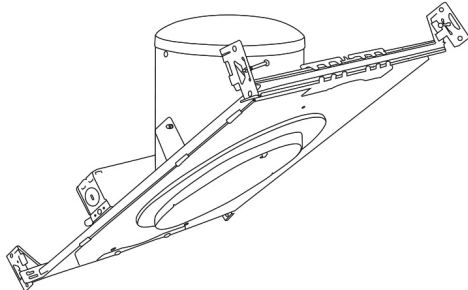
For use with **6" Super Sloped Trims**

6" E26 Base Super Sloped Ceiling IC Housings



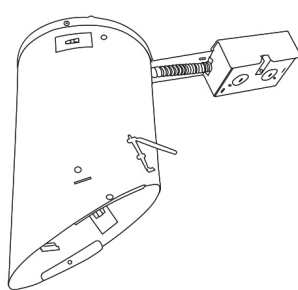
6" E26 Medium Base Sloped Housing
New Construction

CAT NO.	SPECIFICATIONS
EL946ICA	90W Max.



6" E26 Medium Base Sloped Housing
New Construction

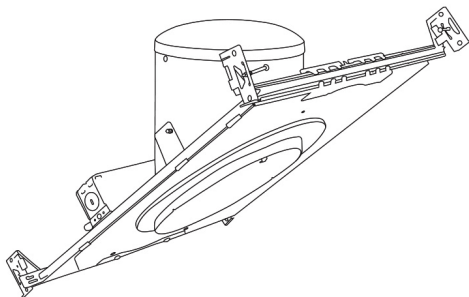
CAT NO.	SPECIFICATIONS
EL901ICA	75W Max.



6" E26 Medium Base Sloped Housing
Remodel

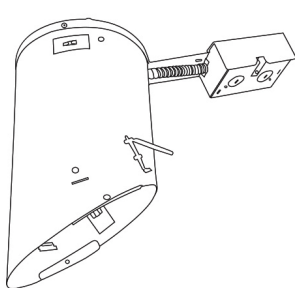
CAT NO.	SPECIFICATIONS
EL901RICA	75W Max.

6" E26 Base Super Sloped Ceiling Non-IC Housings



6" E26 Medium Base Sloped Housing
New Construction

CAT NO.	SPECIFICATIONS
EL901HT	90W Max.



6" E26 Medium Base Sloped Housing
Remodel

CAT NO.	SPECIFICATIONS
EL901RT	90W Max.