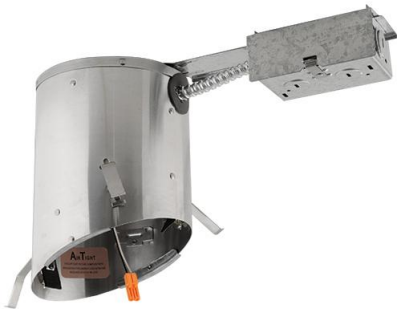


# 5" LED IC Airtight Sloped Ceiling Remodel Housing

ELCO Slant allows for installation in sloped ceilings ranging from 2/12 (10°) to 6/12 (26.5°). Can be used in insulated ceilings. Fits in 2" x 8" joist construction.



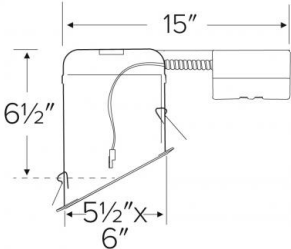
## Features

- Allows for use in 2" x 8" construction.
- Designed for use in 2/12 to 6/12 sloped ceiling.
- California Title 24 (JA8-2016-E).

## Specifications

<b>Wattage</b>	24W
<b>Voltage</b>	120V
<b>Damp Location</b>	Listed

## Dimensions



## Technical Details

### Construction:

- IC Rated for Direct Contact with Insulation.
- Designed for use in 2/12 to 6/12 sloped ceiling.
- Housing adjusts to accommodate up to 1 1/4" ceiling thickness.
- Aluminum housing for greater heat dissipation.

**Installation:** Designed for ceiling plenums where 2x8 joists or taller are used. Template for hole cutout is provided with each housing. See installation sheet for detailed information.

**Junction Box:** Positioned to accommodate straight conduit runs. Seven 1/2" trade size conduit knockouts and One 3/4" knockout. Four true pry-out knockout slots for easy Romex installation.

### Electrical:

- Connection is rated for 120V or 277V input.
- For 277V step down to 120V housing consult factory.

### Listings:

- UL Listed for Damp Location.
- UL Listed for Direct Contact with Insulation and Combustible Material.
- UL Listed for Feed Through.
- AirTight Per ASTM E-283.
- California Title 24 (JA8-2016-E).

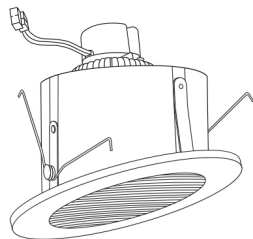
**Warranty:** ELCO Products are built to last. 5-year Limited warranty.

## Product Numbers

Item	Watts	Voltage
EL590RICA	24W	120V

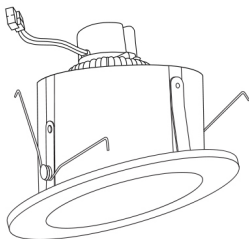
For use with **5" Dedicated LED Sloped Ceiling IC Housings**

## 5" LED Sloped Inserts



5" LED Sloped Insert  
**Baffle Trim**

CAT NO.	COLOR	SPECIFICATIONS
EL51127W	White	1050 lm/2700K
EL51130W	White	1050 lm/3000K
EL51127B	Black	1050 lm/2700K
EL51130B	Black	1050 lm/3000K
EL51127BZ	Bronze	1050 lm/2700K
EL51130BZ	Bronze	1050 lm/3000K



5" LED Sloped Insert  
**Reflector Trim**

CAT NO.	COLOR	SPECIFICATIONS
EL51227W	White	1050 lm/2700K
EL51230W	White	1050 lm/3000K
EL51227B	Black	1050 lm/2700K
EL51230B	Black	1050 lm/3000K
EL51227C	Bronze	1050 lm/2700K
EL51230C	Bronze	1050 lm/3000K



# Dimmer Compatibility Chart

## LED Sloped Ceiling

**ELCO Lighting**

### For Reference Only

Testing conducted by ELCO Lighting is not a substitute for and does not imply certification by an independent laboratory or any other standards certification. Refer to manufacturer specifications for more detailed information on product certifications and standards. Consult the dimmer manufacturer prior to installation to ensure compatibility.

Manufacturer	Product	Part Number	Dimmed Light Output Range
Eaton	Decorator Single Pole/3-Way dimmer	DLC03P	10% - 100%
Leviton	Decora SureSlide® Single Pole Slide-To-Off w ith Optional Locator Light	6631	10% - 100%
	Decora SureSlide® Single Pole/3-Way w ith Preset ON/OFF switch and Optional Locator Light	6633	10% - 100%
	Universal Decora Dimmable LED, CFL and Incandescent SureSlide Slide Dimmer	6672	10% - 100%
	Decora SureSlide® Universal Dimmer	6674	10% - 100%
Lutron	Skylark® Contour single pole, incandescent / halogen dimmer	CT-600P	10% - 100%
	Skylark® Contour 3-w ay, incandescent / halogen "eco-dim" dimmer	CT-603PG	5% - 85%
	Diva® (gloss) single pole, incandescent / halogen, preset dimmer	DV-600P	10% - 100%
	Diva® (gloss) 3-w ay, incandescent / halogen, preset dimmer	DV-603P	10% - 100%
	Diva® (gloss) C•L single pole/3-w ay dimmer	DVCL-153P	5% - 86%
	Maestro® C•L single pole/3-w ay/multi-location dimmer	MA CL-153M	10% - 100%
	Skylark® Series Dual Slide-to-Off dimmer	S-2	10% - 100%
	Skylark® single pole, incandescent/halogen, slide-to-off dimmer	S-600	10% - 100%
	Ariadni®/Toggler® Series 150W Single Pole/3-Way dimmer	TGCL-153P	5% - 86%

\*NOTE: Refer to dimmer manufacturer's documentation for installation instructions and circuit details

Disclaimer: Minimum and maximum loads for LEDs and CFLs are given in number of lamps and may vary depending on the lamp being used. Testing conducted by ELCO Lighting is not a substitute for and does not imply certification by an independent laboratory or any other standards certification. Refer to manufacturer specifications for more detailed information on product certifications and standards.