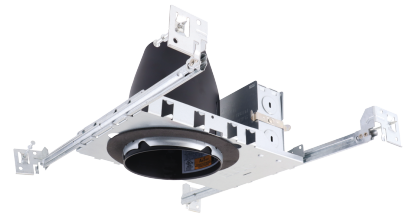


4" E26 Base ICA New Construction Housing - For LED Lamps only



Features

- 4" Line Voltage IC Airtight Housing.
- Lamp: 12W MAX.
- cUL Listed for damp location and for feed through.
- cUL Listed for direct contact with insulation

Specifications

Wattage	12W
Voltage	120V
Lamp Type	LED
Damp Location	Listed

Product Numbers

Item	Lamp type	Watts	Voltage
EL99LDICA	LED	12W	120V

Technical Details

Construction:

- Housing adjusts in frame to accommodate up to 1 1/2" ceiling thickness.
- Airtight housing with gasket to restrict airflow in accordance with ASTM E-283 air-tight requirements.
- Stamped galvanized steel frame.

Installation: Designed for ceiling plenums where 2x6 joists or taller are used. High strength hanger bars can easily be nailed to joists. Maximum hole cutout is 4 1/4". Suitable for T-grid and drop ceiling applications. See installation sheet for detailed information.

Junction Box: Positioned to accommodate straight conduit runs. Seven 1/2" trade size pryout conduit knockouts, 4 Romex pryouts with strain relief.

Hanger Bars: Pre-installed hanger bars with True Nail facilitate easy installation in regular lumber, engineered lumber, and laminated beams. Integral T-bar slots for easy installation in T-grids. Spans up to 24" and can be repositioned 90°. Score lines allow for tool-free hanger bar size reduction. Integral leveling flange allows for single-person installation while aligning the housing with the joists.

Electrical:

- Input Voltage: 120V AC.
- Thermally protected against improper lamping.

Trims: Compatible with ELCO 4" Line Voltage PAR/R trims.

Lamp: Designed for use with Medium Base (E26) PAR/R lamps up to 12W.

Listings:

- cUL Listed for Damp Location.
- cUL Listed for Direct Contact with Insulation (Type IC)
- cUL Listed for Feed Through.
- Airtight per ASTM E-283.
- Install a JA8-2016-E lamp/luminaire for Title 24 Compliance.

Warranty: ELCO Lighting warrants products will be free from defects in materials and workmanship for a period of 3 years.