

3" IC Airtight Remodel Housing for Koto™ Architectural LED Light Engine



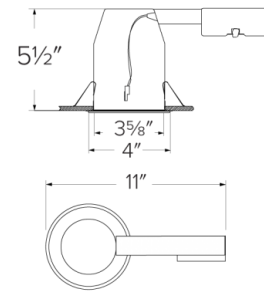
Features

- IC Airtight for direct contact with insulation.
- Koto™ Architectural Housing: 120V Triac/ELV.
- Must be used with Architectural Koto™ LED Light Engines (ELK19, ELK21, or ELK24 Series).
- Lumen output based on module.

Specifications

| | |
|-----------------|---|
| Wattage | 10.5W - 11.8W |
| Lumens | 750 (ELK19) - 950 (ELK21) - 1100 (ELK24) lm |
| Voltage | 120/277V or 120V |
| Dimmable | Triac/ELV, 0-10V/Triac/ELV |

Dimensions



Technical Details

Lamp: Designed for use with ELCO Architectural Koto™ LED Light Engines (ELK19, ELK21, or ELK24 Series).

Construction:

- Single Wall IC Rated for direct contact with insulation, for use in IC or non-IC conditions.
- Housing accommodates up to 1 1/2" ceiling thickness.
- Airtight housing with gasket to restrict airflow in accordance with ASTM E-283 air-tight requirements.

Installation: Designed for ceiling plenums where 2x6 joists or taller joists are used. Maximum hole cutout is 3 5/8". See installation sheet for detailed information.

Junction Box: Positioned to accommodate straight conduit runs. Seven 1/2" trade size conduit knockouts, four 3/4" knockouts. Pry-out knockout slots. 4 Romex pryouts with strain relief.

Electrical:

- Input Voltage: 120V.
- High efficiency driver with power factor >0.9

Dimmability:

- Triac/ELV

Listings:

- cUL Listed for Damp Location.
- cUL Listed for Wet Location with select trims.
- cUL Listed for Feed Through.
- cUL Listed for Direct Contact with Insulation and Combustible Material.
- Airtight per ASTM E-283.
- Install a JA8-2016-E lamp/luminaire for Title 24 Compliance.

Warranty: ELCO Lighting warrants products will be free from defects in materials and workmanship for a period of 5 years.

Product Numbers

| Item | Description | Lumens | Watts | Voltage | Dimming |
|-------------------|-------------|---|-------|----------|-----------------|
| E3LK65RICA | Remodel | 750 (ELK19) - 950 (ELK21) - 1100 (ELK24) lm | 10.5W | 120V | Triac/ELV |
| | | 750 (ELK19) - 950 (ELK21) - 1100 (ELK24) lm | 11.8W | 120/277V | 0-10V/Triac/ELV |

Product Number Builder

Example: **E3LK65RICA**

3" Koto™ Standard ICA Remodel Housing

Voltage

Dimming

E3LK

65 120V ¹

66 120/277V ²

RICA Triac/ELV

RICAD 0-10V/Triac/ELV

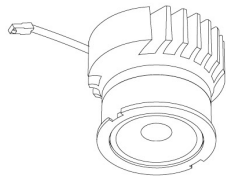
¹ Available as 120V, Triac/ELV only

² Available as 120/277V, 0-10V/Triac/ELV only

Compatible Products

For use with Dedicated 3" Architectural ICA LED Housings

Koto™ Architectural LED Light Engine



Koto™ LED Light Engine
ELK19, ELK21 & ELK24

| PRODUCT NUMBER BUILDER | | | |
|------------------------|-----------------|--------------------------------|---------------------------------------|
| Koto™ LED Light Engine | Lumens | Color Temperature | Beam Angle |
| ELK | | | |
| 19 | 750 - 850 lm* | 27D 2700K | (blank) 38° lens (Standard) |
| 21 | 1100 - 1500 lm* | 30D 3000K | -S 18° lens |
| 24 | 1100 - 1800 lm* | 35D 3500K | -N 25° lens |
| | | 40D 4000K | -W 60° lens |
| | | SD Sunset Dimming (ELK19 Only) | -FC 18° - 50° Adjustable (ELK21 Only) |

*Wattage based on housing.

ACCESSORIES



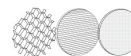
Lens

- EP731C 18° Lens
- EP732C 25° Lens
- EP733C 38° Lens
- EP734C 60° Lens

*EP732C, EP733C, EP734C Included

Reflectors

- EP735C 15°
- EP736C 25°
- EP737C 38°
- EP738C 60°



Secondary Optics

- L45 Hex Louver
- L46 Linear Lens
- L47 Spread Louver
- L49 Frosted Lens
- L50 Color Shifter

3" Pex™ Twist-&-Lock Trims



Deep Reflector

ELK3618

Finishes:
(W, BB, BZ, B, C, H)



Adjustable Gimbal

ELK3629

Finishes:
(W, BB, BZ, B, C, H)



Adjustable Pinhole

ELK3627

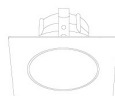
Finishes:
(B, BB, BZ)



Adjustable Baffle

ELK3693

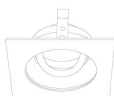
Finishes:
(W)



Sq. Deep Reflector

ELK3318

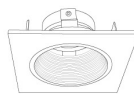
Finishes:
(W, BB, BZ, B, C, H)



Sq. Adjustable Gimbal

ELK3329

Finishes:
(W, BB, BZ, B, C, H)



Sq. Adjustable Baffle

ELK3393

Finishes:
(W)



Sq. Adjustable Pinhole

ELK3327

Finishes:
(B, BB, BZ)

*Finishes: **W** - All White, **BB** - All Black, **BZ** - All Bronze, **B** - Black Reflector w/White Ring, **C** - Chrome Reflector w/White Ring, **H** - Haze Reflector w/White Ring