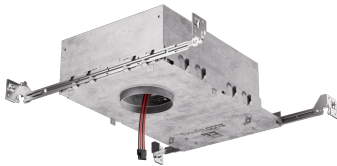


2" Tunable White Koto™ IC Airtight Housing

120/277V AC/50-60Hz. Must be used with Tunable White Koto™ LED Light Engines (ELK19TWD Series).



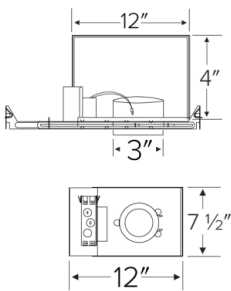
Features

- IC Airtight for direct contact with insulation.
- 120/277V AC/50-60Hz universal input voltage
- Smooth, flicker-free dimming and CCT tuning
- Dimmable to 0.1%, dim to dark
- E21KT10 (1000 lm, 14W) 4" Height
- E21KT12 (1250 lm, 18.3W) 5½" Height
- Damp location rated and wet location rated for wet location trims

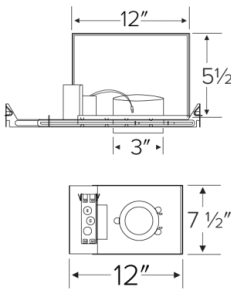
Specifications

Wattage	14W - 18.3W
Lumens	1000 lm - 1250 lm
Voltage	120/277V AC
Dimmable	0-10V
Lamp Type	LED
Wet Location	Rated for wet location trims
Damp Location Rated	

E21KT10ICA Dimensions



E21KT12ICA Dimensions



Technical Details

Construction: Double Wall IC Rated for direct contact with insulation. For use in IC and Non-IC conditions. Up to 1100 lumens. Housing adjusts in the frame to accommodate up to 1 1/2" ceiling thickness. Airtight housing with gasket to restrict airflow in accordance with ASTM E-283 air-tight requirements.

Installation: Designed for ceiling plenums where 2x6 joists or taller are used. High-strength hanger bars can easily be nailed to joists. Suitable for T-grid and drop ceiling applications. See the installation sheet for detailed information. For use with ELCO Tunable White Koto™ LED Light Engines (ELK19TWD Series)

Junction Box: Positioned to accommodate straight conduit runs. Two 3/4" knockouts, Seven 1/2" trade size conduit knockouts, and One 3/8" knockout. Four Pry-out knockout slots for easy Romex installation.

Hanger Bars: Pre Installed hanger bars with True Nail easy installation in regular lumber, engineered lumber, and Laminated Beams. Integral T-bar slots for easy installation in T-Bars. Spans up to 24" and can be repositioned 90°. Score lines allow for tool-free hanger bar size reduction. Integral leveling flange allows for single-person installation while easily aligning the housings with the joists.

Electrical: Driver is rated for 120V and 277V input (120/277V). High-Efficiency driver with a power factor > 0.95.

Driver Options:

- Standard: Integrated dual-channel 0-10V Dimming, no control module required

Dimmability: 0-10V dimming in one driver. 0-10V dimming down to 5% with a compatible dimmer. Can be specified with Lutron drivers for 0.1% and 1% dimming. For a full list of dimmers refer to the Dimmer Compatibility List.

Product Numbers

Item	Description	Lamp type	Lumens	Watts	Voltage	Dimming
E21KT10ICAD	IC Airtight Housing	LED	1000 lm	14W	120/277V AC	0-10V
E21KT12ICAD	IC Airtight Housing	LED	1250 lm	18.3W	120/277V AC	0-10V

Product Number Builder Example: E21KT10ICAD

2" Tunable White Koto™ Shallow IC Airtight Housing

E21KT

Lumens

10	1000 (14W)
12	1250 (18.3)

IC Rated

ICA IC Airtight Housing

Driver

D Standard

Compatible Products



For use with Dedicated 2", 3" & 4" Koto Tunable White Housings



Control Modules Features

- Requires control ready housing
- Seamless device commissioning
- Rules setting and supervision
- Data gathering on usage, locations, users, time of day
- Automation based on users and sensors
- Firmware updates over the air
- Customizable and integration-ready APIs
- Control module required per housing

Wireless Control Modules for Tunable White Koto™



CASAMBI

ETW3CS

- iOS app and Android app interface options
- Predictive Maintenance
- Ecosystem with sensors and switches, lamps and luminaires



Technology Partner
SILVAIR

ETW3SL

- iOS app and web portal interface options
- Energy usage monitoring
- Ecosystem with sensors, switches



WiZ
CONNECTED

ETW3WZ

- iOS app, Android app, and web portal interface options
- Predictive Maintenance
- Ecosystem with sensors and switches, lamps and luminaires



WISILICA

ETW3WS

- iOS app, Android app, and web portal interface options
- Energy usage monitoring
- Predictive Maintenance
- Ecosystem with sensors, switches, gateways

Wired Control Protocol for Tunable White Koto™

**Wired control devices required*



DALI-2

ETW3DL

- DALI-2 DT8 certified
- Two-channel control of color temperature and intensity
- Commission and manage lighting fixtures via DALI2 DT8 certified controller



0-10V

ETW310V

- 0-10V Control Module is compatible with industry standard 0-10V, 1-10V current sourcing or current sinking wired control devices. The Control Module provides for two-channel control of color temperature and intensity

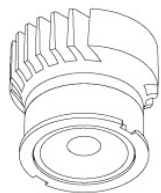
Requires Control Ready Housing Option. One Control module required per housing
*Control Modules Order Separately

Compatible Products

For use with Dedicated 2" Tunable White Koto™ IC LED Housings



Koto™ LED Module



Tunable White
Koto™ LED Module
ELK19

PRODUCT NUMBER BUILDER

Koto™ LED Module	Color Temperature	Beam Angle
ELK19		
TWD	2700K - 5000K	(blank) 38° lens (Standard)
T41D	1800K - 4000K	-S 18° lens
T62D	2700K - 6500K	-N 25° lens
		-W 60° lens

ACCESSORIES



Lens

EP731C 18° Lens
EP732C 25° Lens
EP733C 38° Lens
EP734C 60° Lens

EP732C, EP733C, EP734C Included



Snoot

L50W White
L50B Black



Secondary Optics

L45 Hex Louver
L46 Linear Lens
L47 Spread Louver
L49 Frosted Lens
L51 Color Shifter

2" Pex™ Twist-On Trims



Round Deep Reflector

ELK2818

Finishes: (W, B, H, BB, BZ)



Round Adjustable Reflector

ELK2829

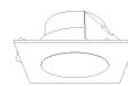
Finishes: (W, B, H, BB, BZ)



Round Adjustable Pinhole

ELK2827

Finishes: (W, B, BB, BZ)



Square Deep Reflector

ELK2518

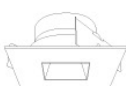
Finishes: (W, B, BB)



Square Adjustable Reflector

ELK2529

Finishes: (W, B, BB)



Square Reflector

ELK2541

Finishes: (W, B, BB)



Square Adjustable Pinhole

ELK2527

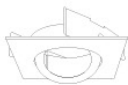
Finishes: (W, B, BB)



Round Gimbal

ELK2888

Finishes: (W, B, BZ)



Square Gimbal

ELK2588

Finishes: (W, BZ)

Compatible Products

For use with Dedicated 2" Tunable White Koto™ IC LED Housings



2" Accessories



Emergency Battery Backup

CAT NO.	SPECIFICATIONS
KEM-LD5	8W, 120/277V

* Requires access from above



Fire Cover

CAT NO.	SPECIFICATIONS
FIRECVR	9 3/4" H x 17" O.D.



Fire Enclosure

CAT NO.	SPECIFICATIONS
FIREENCL	20 3/8" L x 14 3/8" W
FIREENCL-S	Shallow, 16" L x 14 3/8" W



Mica Fire Tape

CAT NO.	SPECIFICATIONS
FIRETAPE	3/4" W x 16' L