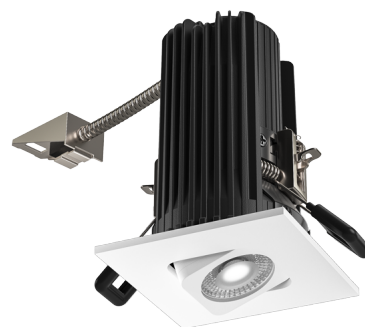


# 2" Square Adjustable Teak™ LED Light Engine

The Teak™ LED light engine is an IC Rated diecast construction specification grade 2" LED downlight. Boasting an output up to 1100 lumens - more than a traditional 75W MR16 halogen lamp. Style options, beam options and color finish options offer maximum flexibility in design. Drivers and housings are specified separately for maximum flexibility per your project's needs. The patented engine offers auto release clips that make installation a breeze.



## Features

- Dimmable ELV, Triac or 0-10V depending on driver used.
- Same LED light engine for 850 and 1100 lumens (see housings)
- cUL Listed for Direct Contact with insulation
- Works with compatible ceilings up to 1 1/4"
- Height allows for use in ceilings with under 5" depth. Ceiling thickness can be reduced from fixture depth.
- 38° Standard beam with optional 28° and 60°
- Damp Location Rated
- JA8-2016-E, cUL, and Energy Star Qualified
- Life Span 50,000 Hours L70
- U.S. Pat. 10,125,959

## Specifications

|                      |               |
|----------------------|---------------|
| <b>Wattage</b>       | 10.5 - 12.5W  |
| <b>Lumens</b>        | 850 - 1100 lm |
| <b>Color Temp.</b>   | 2700K         |
| <b>Lamp Type</b>     | LED           |
| <b>Beam Angle</b>    | 38°           |
| <b>CRI</b>           | 93+           |
| <b>Damp Location</b> | Listed        |

## Options



White



All Bronze



All Black

## Technical Details

**Optics:** PC Lens for even lumen distribution. Standard 38° lens. Optional 28° (EP716C) and 60° (EP718C) available.

**Construction:** Diecast construction for lasting quality and greater heat dissipation. High quality powder coat finish prevents rust and paint cracking.

**Adjustability:** 360° rotation with 35° gimbal adjustability.

**Installation:** All Teak™ LED Light Engines feature a patented trigger release clip that will depress as the module is being inserted, holding the module in place. Hole cutout size: 2-5/8" (68 mm). Teak™ LED Light engines require driver

**LED Technology:** Extremely accurate color rendering with 93+ CRI. Efficacy of up to 104 lumens per watt. Lumen Maintenance of 50,000 hours L70 based on LM80. Superior Thermal Management by utilizing diecast aluminum body as heat sink.

**Electrical:** Requires driver. Driver and housing can be specified with voltage (120V or 120/277V) and dimming (ELV/Triac or 0-10V/Triac/ELV).

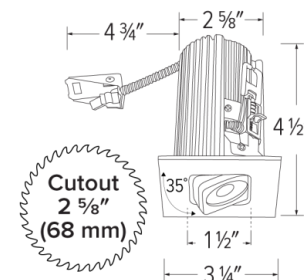
**Compatible Housings/Delivered Lumens:** Teak™ Light Engines are compatible with 120/277V 0-10V/Triac/ELV or 120V Triac/ELV Teak™ Housings.

• E2LAJ08ICA, E2LAJ08ICAD, E2L08ICA, E2L08ICAD, E2L08RIC, E2L08RICD (10.5W, 120V)  
**Delivered Lumens:** 2700K: 850 lm, 3000K: 850 lm, 3500K: 850 lm, 4000K: 850 lm

• E2LAJ11ICA, E2LAJ11ICAD, E2L11ICA, E2L11ICAD, E2L11RIC, E2L11RICD (12.5W, 120/277V)  
**Delivered Lumens:** 2700K: 1100 lm, 3000K: 1100 lm, 3500K: 1100 lm, 4000K: 1100 lm

**Dimming:** See Teak™ Housings and drivers for specific dimming information.

## Dimensions



**Listings:** cUL Listed. cUL Listed for DAMP Location. cUL Listed for direct contact with insulation. Airtight per ASTM E-283. ENERGY STAR® Qualified. California Title 24 (JA8-2016-E).

**Warranty:** ELCO Products are built to last with a 5-year Limited warranty.

## Product Number Builder

Example: **E2L19F27W**

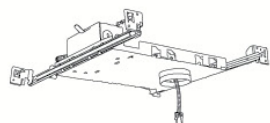
| Square Adjustable | Beam Angle  | Color Temperature  | Finish  |
|-------------------|---|--|---|
| <div>E2L19</div>  | <div><div>F 38°</div><div>NF 28°</div><div>WF 60°</div></div> | <div><div>27 2700K</div><div>30 3000K</div><div>40 4000K</div></div> | <div><div>W All White</div><div>B All Black</div><div>BZ All Bronze</div></div> |

# Compatible Products

For use with 2" Teak™ Light Engines



## 2" Teak™ New Construction IC Rated



2" IC Frame - Includes driver  
**New Construction**

| SERIES | SPECIFICATIONS |
|--------|----------------|
| E2L    | Up to 1100 lm  |



Specialty R-60  
2" IC Housing - Includes driver  
**New Construction**

| SERIES | SPECIFICATIONS |
|--------|----------------|
| E2LAJ  | Up to 1100 lm  |

### PRODUCT NUMBER BUILDER

| 2" Teak™ IC Rated | Style                                     | Lumens            | Dimming                              |
|-------------------|---|-------------------|--------------------------------------|
| <b>E2L</b>        | (Blank) IC New Construction Frame         | <b>08</b> 850 lm  | <b>ICA</b> 120 Triac/ELV             |
|                   | <b>AJ</b> R60 IC New Construction Housing | <b>11</b> 1100 lm | <b>ICAD</b> 120/277V 0-10V/Triac/ELV |

## 2" Teak™ New Construction IC Rated



2" IC Power Pack  
**Remodel**

| SERIES | SPECIFICATIONS |
|--------|----------------|
| E2L    | Up to 1100 lm  |

### PRODUCT NUMBER BUILDER

| 2" Teak™ IC Remodel Power Pack | Lumens            | Dimming                              |
|--------------------------------|-------------------|--------------------------------------|
| <b>E2L</b>                     | <b>08</b> 850 lm  | <b>RIC</b> 120 Triac/ELV             |
|                                | <b>11</b> 1100 lm | <b>RICD</b> 120/277V 0-10V/Triac/ELV |

### PLASTER FRAMES FOR REMODEL POWER PACKS



Plaster Frame  
**Single Cutout**

| CAT NO. |
|---------|
| E2LF1   |



Plaster Frame  
**Multiple Cutout**

| CAT NO.  | SPECIFICATIONS |
|----------|----------------|
| E2LF1-M2 | 2 Set          |
| E2LF1-M3 | 3 Set          |
| E2LF1-M4 | 4 Set          |
| E2LF1-M5 | 5 Set          |

\*For row mounting fixtures

## Accessories for Light Engines & Frames



Optional Lens  
(Field changeable optics)

| CAT NO. | SPECIFICATIONS |
|---------|----------------|
| EP716C  | 28°            |
| EP718C  | 60°            |



**ELCO Lighting**

# Dimmer Compatibility Chart

## 120V - Triac/ELV Dimmers

### For Teak™ System

E2L08ICA, E2L11ICA, E2L08RIC, E2L11RIC

#### For Reference Only

Testing conducted by ELCO Lighting is not a substitute for and does not imply certification by an independent laboratory or any other standards certification. Refer to manufacturer specifications for more detailed information on product certifications and standards. Consult the dimmer manufacturer prior to installation to ensure compatibility.

| Manufacturer | Product   | Part Number                                   | Dimmed Light Output Range |
|--------------|---|---|---------------------------|
| Leviton      | Decora SureSlide® Single Pole with Slide -to-Off  | 6672  | 15% - 100%                |
|              | Leviton Dimmer  | 1K3502  | 5% - 100%                 |
| Lutron       | Vive, 120V, 150W LED/CFL, 600W Incandescent/Halogen, FP, Single Pole/Multi-Location Dimmer, Commercial Application                    | MRF2S-6CL                                     | 12% - 91%                 |
|              | Panel Model, Commercial/Residential Application, FP   | GP (Harrier) Card                             | 10% - 94%                 |
|              | Grafik QS/Mailbox Power Module, 120/220 to 240V AC, LED/Incandescent/Halogen Load Type, Commercial/Residential Indoor Application, FP | LQRJ-WPM-6P                                   | 10% - 95%                 |
|              | Grafik Eye 3000/HomeWorks, 120V, Incandescent/Fluorescent Load Type, Commercial/Residential Application, FP                           | HWI-WPM-6D-120                                | 10% - 95%                 |
|              | Panel Dimming Module, 120V, Commercial/Residential Application, FP  | HW/LP-RPM-4U-120                              | 10% - 95%                 |
|              | Panel Adaptive Dimming Module, 120V, Commercial/Residential Application, FP   | HW/LP-RPM-4A-120                              | 9% - 95%                  |
|              | HomeWorks® QS for CFL/LED loads, 120V, RP, Commercial/Residential Application   | LQSE-4A1-D/MQSE-4A1-D/<br>MQSE-3A1/MQSE-2A1-D | 8% - 95%                  |
|              | Energi Savr Node LED+ Phase Adaptive, Commercial Application, Reverse Phase, (Zone 1) (Zones 2-4)                                     | QSN-4A5-S                                     | 8% - 95%                  |
|              | Energi Savr Node LED+ Phase Adaptive, Commercial Application, Forward Phase, (Zone 1) (Zones 2-4)                                     | QSN-4A5-S                                     | 10% - 97%                 |
|              | RadioRA®2, 120V, 50/60-Hz, 150W LED or 600W Incandescent/Halogen, 3-Way & 4-Way, Residential Application                              | RRD-6CL                                       | 10% - 95%                 |
|              | RadioRA®3, 120V, 250W LED/CFL or 500W Incandescent/Halogen, Single Pole, Multi-Location   | RRST-PRO-N                                    | 10% - 95%                 |
|              | HomeWorks® QS, 120V, 60-Hz, 150W LED/CFL or 600W Incandescent/Halogen/MLV, Residential Application                                    | HQRD-6CL(H2)<br>HQRA-6CL(H2)                  | 10% - 95%                 |
|              | Homeworks QS, Residential Application, Reverse Phase  | LQSE-4A-120-D                                 | 8% - 89%                  |
|              | HomeWorks® for LED/Incandescent/Halogen loads, Reverse Phase, (Zone 1) (Zones 2-4)  | LQSE-4A5-120-D                                | 8% - 89%                  |
|              | HomeWorks® for LED/Incandescent/Halogen loads, Forward Phase, (Zone 1) (Zones 2-4)  | LQSE-4A5-120-D                                | 10% - 100%                |
|              | Ariadni® C-L Single Pole/3-Way, 150W LED/CFL or 600W Incandescent/Halogen   | AYCL-153P                                     | 10% - 100%                |
|              | Skylark Contour® C-L, Single Pole/3-Way, 150W LED/CFL or 600W Incandescent/Halogen  | CTCL-153P                                     | 10% - 100%                |
|              | Skylark® C-L Single Pole/3-Way, 150W LED/CFL or 600W Incandescent/Halogen   | SCL-153P                                      | 10% - 100%                |

Integrating our lighting with your Smart Home System is a breeze. Simply check your Smart Home system for compatible smart switches and cross reference that with our Dimming Compatibility Chart. Once the switches are integrated with your Smart Home system your lights will be ready to go.



2042 E. Vernon Ave. Vernon CA 90058 Tel 323.231.2600 Fax 323.231.3200 [elcolighting.com](http://elcolighting.com)

| Manufacturer | Product  | Part Number | Dimmed Light Output Range |
|--------------|--|-------------|---------------------------|
| Lutron       | Diva® Series 150W Single Pole/3-Way Dimmer   | DVCL-153P   | 10% - 100%                |
|              | Skylark Contour® Single Pole/3-Way 1000W Incandescent/Halogen                                    | CT-103P     | 10% - 100%                |
|              | Skylark® Single Pole 300W ELV Preset Dimmer  | SELV-300P   | 5% - 100%                 |
|              | Skylark® Single Pole 600W Incandescent/Halogen, Slide-to-Off Dimmer                              | S-600P      | 5% - 100%                 |
|              | Diva® 300W Single Pole/3-Way ELV Dimmer  | DVELV-303P  | 10% - 100%                |
|              | Diva® 600W Single Pole Incandescent/Halogen Preset Dimmer  | DV-600P     | 5% - 100%                 |
|              | Ariadni® 600W Single Pole Magnetic Low Voltage Dimmer  | AYLV-600P   | 5% - 100%                 |
|              | Ariadni® 600W Single Pole/3-Way Incandescent/Halogen Dimmer                                      | AY-603P     | 5% - 100%                 |
|              | Maestro® 600W Single Pole/3-Way ELV Dimmer   | MAELV-600   | 5% - 100%                 |
|              | Maestro® C-L Single Pole/3-Way Dimmer. 150W Max for LED/CFL or 600W Max for Incandescent/Halogen | MACL-153M   | 10% - 100%                |
|              | Caséta® Wireless Dimmer  | PD-6WCL     | 10% - 100%                |

**\*NOTE: Refer to dimmer manufacturer's documentation for installation instructions and circuit details**

Disclaimer: Minimum and maximum loads for LEDs and CFLs are given in number of lamps and may vary depending on the lamp being used. Testing conducted by ELCO Lighting is not a substitute for and does not imply certification by an independent laboratory or any other standards certification. Refer to manufacturer specifications for more detailed information on product certifications and standards.

Integrating our lighting with your Smart Home System is a breeze. Simply check your Smart Home system for compatible smart switches and cross reference that with our Dimming Compatibility Chart. Once the switches are integrated with your Smart Home system your lights will be ready to go.



2042 E. Vernon Ave. Vernon CA 90058 Tel 323.231.2600 Fax 323.231.3200 [elcolighting.com](http://elcolighting.com)



**ELCO Lighting**

# Dimmer Compatibility Chart

## 120/277V - 0-10V/Triac/ELV Dimmers

For Teak™ System

E2L08ICAD, E2L11ICAD, E2L08RICD, E2L11RICD

### For Reference Only

Testing conducted by ELCO Lighting is not a substitute for and does not imply certification by an independent laboratory or any other standards certification. Refer to manufacturer specifications for more detailed information on product certifications and standards. Consult the dimmer manufacturer prior to installation to ensure compatibility.

| Manufacturer                              | Product  | Part Number     | Dimmed Light Output Range |
|---|--|-----------------|---------------------------|
| <b>Triac/ELV Type Dimmers - 120V Only</b> |  |                 |                           |
| Lutron                                    | 120V AC 60Hz, 600W LED/CFL/Incandescent/Halogen, Single Pole, 3-Way                  | S-603PG         | 5% - 76%                  |
|   | 120V AC 60Hz, 600W LED/CFL/Incandescent/Halogen, Single Pole, 3-Way,                 | DVCL-153P       | 5% - 97%                  |
|   | 120V 60Hz, 150W LED/CFL or 600W Incandescent/Halogen, Single Pole, 3-Way             | TGCL-153P       | 5% - 97%                  |
|   | 120V AC 60Hz, 300W Electronic Low Voltage, 3-Way, Commercial/Residential Application | DVELV303P       | 5% - 97%                  |
|   | 120V, 600W Incandescent/Halogen, Single Pole, Residential Indoor Application         | TG-600P         | 5% - 100%                 |
|   | 120V, 1000W Incandescent or 600W Magnetic Low Voltage, Single Pole, 3-Way            | CT103P          | 5% - 96%                  |
|   | 120V AC 60Hz, 600W Electronic Low Voltage, Single Pole/Multi-Location,               | MAELV600        | 5% - 99%                  |
|   | 120V AC 60Hz, 500W Electronic Low Voltage, Single Pole/Multi-Location,               | FAELV500        | 5% - 99%                  |
|   | 120V, 150W LED/CFL or 600W Incandescent/Halogen, Single Pole, 3-Way                  | LGCL-153PLH     | 5% - 100%                 |
|   | 120V AC 60Hz, 150W LED/CFL or 600W Incandescent/Halogen, Single Pole, 3-Way,         | SCL-153P        | 5% - 98%                  |
| Leviton                                   | 120V AC 60Hz, 150W LED/CFL or 600W Incandescent/Halogen, Single Pole, 3-Way,         | MAELV600        | 5% - 99%                  |
|   | 120V AC 60Hz, 300W Electronic Low Voltage, 400 Volt Amp, Single Pole, 3-Way,         | IPE04           | 5% - 100%                 |
|   | 120V AC 60Hz, 300W CFL or 600W Incandescent, 400 Volt Amp, Single Pole, 3-Way,       | 6673-10W        | 5% - 94%                  |
|   | 120V AC, 600W Incandescent with LED Locator, Single Pole, 3-Way                      | VP106           | 5% - 99%                  |
|   | 120V AC 60Hz, 500W Incandescent with LED Level Indicator, Single Pole, 3-Way         | 6161            | 5% - 100%                 |
|   | 120/277V AC 60Hz, 1200/1600W LED/CFL, Single Pole, 3-Way, Commercial Application     | SF10P           | 5% - 94%                  |
| Eaton                                     | 120V AC 50/60Hz, 150W LED/CFL or 600W Incandescent/MLV/Halogen, Single Pole, 3-Way   | RRD-6CL-WH      | 5% - 100%                 |
|   | 120V AC, 300W LED/CFL or 600W Incandescent/MLV/Halogen, Single Pole, 3-Way,          | TAL06P1-C1      | 5% - 100%                 |
| Cooper                                    | 120V AC 60Hz, 300W LED/CFL or 600W Incandescent/Halogen, Single Pole, 3-Way          | SLC03P / DAL06P | 5% - 99%                  |
|   | 120V AC 60Hz, 300W LED/CFL or 600W Incandescent/Halogen, Single Pole, 3-Way,         | D1C03P          | 5% - 100%                 |
|   | 120V AC 60Hz, 600W Incandescent/Halogen, Single Pole, 3-Way,                         | RI061-VW-K2     | 5% - 100%                 |
|   | 120V AC 60Hz, 300W LED/CFL/ Incandescent/Halogen, Single Pole, 3-Way                 | AAL06A-C2       | 5% - 97%                  |
|   | 120V AC 60Hz, 150W LED/CFL or 600W Incandescent/Halogen, Single Pole, 3-Way,         | 6674            | 5% - 100%                 |
| Lightolier                                | 120V, 260W Incandescent/Halogen, Single Pole, 3-Way,                                 | ZP260QEW        | 5% - 98%                  |
| <b>0-10V Type Dimmers - 120/277V</b>      |  |                 |                           |
| Lutron                                    | 120/277V AC, 0-10V LED/CFL Ballast, Single Pole, 3-Way                               | Nova NFTV       | 1% - 100%                 |
| Leviton                                   | 120/277V AC 50/60Hz, 0-10V LED/CFL Ballast, Single Pole, 3-Way, Indoor Application   | Diva DVTV       | 1% - 100%                 |
|   | 120/277V AC 60Hz, 0-10V LED/CFL Ballast, Single Pole, 3-Way                          | IP710-DL        | 1% - 100%                 |

**\*NOTE: Refer to dimmer manufacturer's documentation for installation instructions and circuit details**

Disclaimer: Minimum and maximum loads for LEDs and CFLs are given in number of lamps and may vary depending on the lamp being used. Testing conducted by ELCO Lighting is not a substitute for and does not imply certification by an independent laboratory or any other standards certification. Refer to manufacturer specifications for more detailed information on product certifications and standards.

Integrating our lighting with your Smart Home System is a breeze. Simply check your Smart Home system for compatible smart switches and cross reference that with our Dimming Compatibility Chart. Once the switches are integrated with your Smart Home system your lights will be ready to go.



2042 E. Vernon Ave. Vernon CA 90058 Tel 323.231.2600 Fax 323.231.3200 [elcolighting.com](http://elcolighting.com)