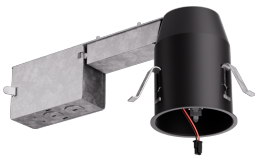


# 2" IC Airtight Remodel Housing for Koto™ Architectural LED Light Engine

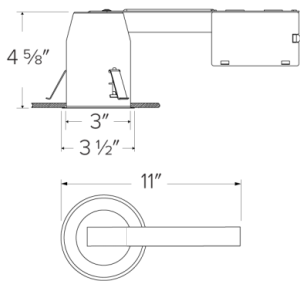


## Features

- IC Airtight for direct contact with insulation.
- Koto™ Architectural Housing: 120V Triac/ELV.
- Must be used with Architectural Koto™ LED Light Engines (ELK19, ELK21, or ELK24 Series).
- Lumen output based on module.

## Specifications

<b>Wattage</b>	10.5W
<b>Lumens</b>	750 (ELK19) - 950 (ELK21) - 1100 (ELK24) lm
<b>Voltage</b>	120V
<b>Dimmable</b>	Triac/ELV
<b>CRI</b>	90+
<b>Wet Location</b>	Listed
<b>Damp Location</b>	Listed



## Technical Details

**Lamp:** Designed for use with ELCO Architectural Koto™ LED Light Engines (ELK19, ELK21, or ELK24 Series).

### Construction:

- IC Rated for direct contact with insulation, for use in IC or Non-IC conditions.
- Housing accommodates up to 1 1/2" ceiling thickness.
- Airtight housing with gasket to restrict airflow in accordance with ASTM E-283 air-tight requirements.

**Installation:** Designed for ceiling plenums where 2x6 joists or taller joists are used. Maximum hole cutout is 3 1/4". See installation sheet for detailed information.

**Junction Box:** Positioned to accommodate straight conduit runs. Seven 1/2" trade size conduit knockouts, four 3/4" knockouts. Pry-out knockout slots. 4 Romex pryouts with strain relief.

**Electrical:** Input Voltage: 120V. High efficiency driver with power factor >0.9

**Dimmability:** Triac/ELV

### Listings:

- cUL Listed for Damp Location.
- cUL Listed for Wet Location with select trims.
- cUL Listed for Feed Through.
- cUL Listed for Direct Contact with Insulation and Combustible Material.
- Airtight per ASTM E-283.
- Install a JA8-2016-E lamp/luminaire for Title 24 Compliance.

**Warranty:** ELCO Lighting warrants products will be free from defects in materials and workmanship for a period of 5 years.

## Product Numbers

Item	Description	Lumens	Watts	Voltage	Dimming
E2LK57RICA	Remodel	750 (ELK19) - 950 (ELK21) - 1100 (ELK24) lm	10.5W	120V	Triac/ELV

Product Number Builder

Example: E2LK57RICA

2" Koto™ Standard ICA Remodel Housing

Voltage

Dimming

E2LK

57 120V

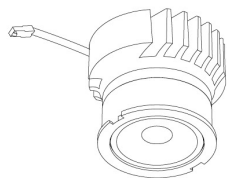
RICA Triac/ELV

# Compatible Products

For use with Dedicated 2" Koto Architectural ICA LED Housings



## Koto™ Architectural LED Light Engine



**Koto™ LED Light Engine**  
ELK19, ELK21 & ELK24

PRODUCT NUMBER BUILDER			
Koto™ LED Light Engine	Lumens	Color Temperature	Beam Angle
ELK			
	19 750 - 850 lm*	27D 2700K	(blank) 38° lens (Standard)
	21 1100 - 1500 lm*	30D 3000K	-S 18° lens
	24 1100 - 1800 lm*	35D 3500K	-N 25° lens
		40D 4000K	-W 60° lens
		SD Sunset Dimming (ELK19 Only)	-FC 18° - 50° Adjustable (ELK21 Only)

\*Wattage based on housing.

### ACCESSORIES



#### Lens

**EP731C** 18° Lens  
**EP732C** 25° Lens  
**EP733C** 38° Lens  
**EP734C** 60° Lens

\*EP732C, EP733C, EP734C Included



#### Snoot

**L50W** White  
**L50B** Black



#### Secondary Optics

**L45** Hex Louver  
**L46** Linear Lens  
**L47** Spread Louver  
**L49** Frosted Lens  
**L51** Color Shifter

## 2" Pex™ Twist-On Trims



**Round Deep Reflector**

**ELK2818**

Finishes:

(W, B, H, BB, BZ)



**Round Adjustable Reflector**

**ELK2829**

Finishes:

(W, B, H, BB, BZ)

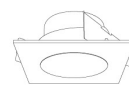


**Round Adjustable Pinhole**

**ELK2827**

Finishes:

(W, B, BB, BZ)

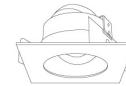


**Square Deep Reflector**

**ELK2518**

Finishes:

(W, B, BB)

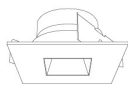


**Square Adjustable Reflector**

**ELK2529**

Finishes:

(W, B, BB)

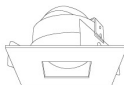


**Square Reflector**

**ELK2541**

Finishes:

(W, B, BB)



**Square Adjustable Pinhole**

**ELK2527**

Finishes:

(W, B, BB)

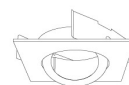


**Round Gimbal**

**ELK2888**

Finishes:

(W, B, BZ)



**Square Gimbal**

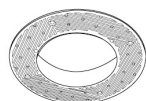
**ELK2588**

Finishes:

(W, BZ)

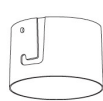
## 2" Pex™ Trimless

Only for use with E2LK41ICA, E2LK42ICAD, E2LK94ICA & E2LK95ICAD Housings



**Spackle Frame**

**EL2SFR**



**Adjustable Trimless Reflector**

**ELK215**

Finishes:

(W, B)