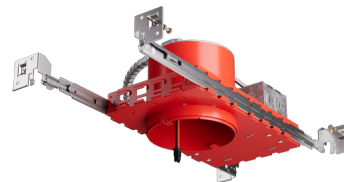


New Construction IC Airtight Housing for 2-Hr Fire Rated Ceilings

Maximum 2-Hour Fire Rated ceiling assembly can be maintained when installed according to the International Building Code, Section 714.



Features

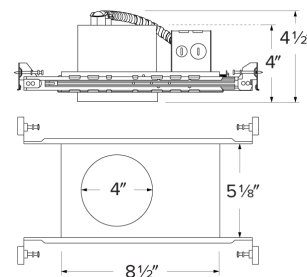
- New Construction IC Airtight Housing **for 2-Hour Fire Rated ceilings**
- Junction Box with hanger bars with quick-connect for easy Architectural Koto™ LED Module installation
- Round opening for easy hole cutting
- Maximum 2-Hour Fire Rated ceiling assembly can be maintained when installed according to the International Building Code, Section 714
- Covered by U.S. Patents

Specifications

Voltage 120/277V or 120V

Dimmable Triac/ELV,
0-10V/Triac/ELV

Dimensions



Technical Details

Installation: Hanger bars that can be nailed to joists.

Hanger Bars: Hanger bars with True Nail for easy installation in regular lumber, engineered lumber, and laminated beams. Integral T-bar slots for easy installation in T-Bars. Hanger bars span 24". Score lines allow for tool-free hanger bar size reduction. Integral leveling flange allows for single-person installation while aligning housing with the joists.

Listings:

- IC Rated for direct contact with insulation
- For 2-Hr Fire Rated ceilings
- cUL listed under cUL 514A Standards as a metallic outlet box

Compatible With:

- Architectural Koto™ LED Light Engines

Product Numbers

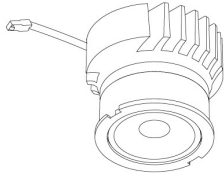
Item	Description	Voltage	Dimming
E4JB85ICA	4" O.D. x 4 1/2" H	120V	Triac/ELV
E4JB86ICAD	4" O.D. x 4 1/2" H	120/277V	0-10V/Triac/ELV

Compatible Products

For use with Housings for 2-Hour Fire Rated Ceilings



Koto™ Architectural LED Light Engine



Koto™ LED Light Engine
ELK19, ELK21 & ELK24

PRODUCT NUMBER BUILDER				
Koto™ LED Light Engine	Lumens	Color Temperature	Beam Angle	
ELK				
19	750 - 850 lm*	27D 2700K	(blank)	38° lens (Standard)
21	1100 - 1500 lm*	30D 3000K	-S	18° lens
24	1100 - 1800 lm*	35D 3500K	-N	25° lens
		40D 4000K	-W	60° lens
		SD Sunset Dimming (ELK19 Only)	-FC	18° - 50° Adjustable (ELK21 Only)

*Wattage based on housing.

ACCESSORIES



Lens

EP731C 18° Lens
EP732C 25° Lens
EP733C 38° Lens
EP734C 60° Lens

*EP732C, EP733C, EP734C Included



Snoot

L50W White
L50B Black



Secondary Optics

L45 Hex Louver
L46 Linear Lens
L47 Spread Louver
L49 Frosted Lens
L51 Color Shifter

4" Pex™ Twist-On Trims



Adjustable Gimbal

ELK4129

Finishes:

(W, BB, BZ, B, C, H)

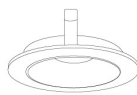


Adjustable Pinhole

ELK4127

Finishes:

(W, BB, BZ, B, H, CP)

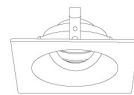


Shallow Reflector

ELK4116

Finishes:

(W, H)

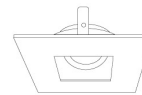


Adjustable Gimbal

ELK4229

Finishes:

(W, BB, BZ, B, C, H)

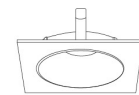


Adjustable Pinhole

ELK4227

Finishes:

(W, BB, BZ, B, N)



Shallow Reflector

ELK4216

Finishes:

(W, H)

4" Unique™ Twist-On Trims

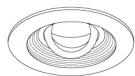


Shallow Reflector

ELK4710

Finishes:

(W, B, BZ)



Shallow Baffle

ELK4713

Finishes:

(W, BZ)



Wall Wash

ELK4715

Finishes:

(W, BZ)

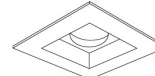


Adjustable Spot

ELK4188

Finishes:

(W, B, BZ)

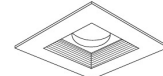


Square Reflector

ELK4714

Finishes:

(W, B, BZ)



Square Baffle

ELK4716

Finishes:

(W, BZ)

*Finishes: **W** - All White, **BB** - All Black, **BZ** - All Bronze, **B** - Black Reflector w/White Ring, **C** - Chrome Reflector w/White Ring, **H** - Haze Reflector w/White Ring